

# TAP

Trans Adriatic Pipeline



## ESIA Albania

### Annex 6.3 – Onshore Social Environment

 		Page 2 of 29					
		Area Code	Comp. Code	System Code	Disc. Code	Doc.- Type	Ser. No.
Project Title:	<b>Trans Adriatic Pipeline – TAP</b>	<b>AAL00-ERM-641-Y-TAE-1008</b> <b>Rev.: 03 / at24</b>					
Document Title:	<b>ESIA Albania Annex 6.3 - Onshore Socioeconomic Environment</b>						

## TABLE OF CONTENTS

6.3	Onshore Socioeconomic Environment	3
6.3.1	Overview of Study Area and Inventory of Settlements	3
6.3.2	Raw Traffic Counts Data	8
6.3.2.1	Raw Traffic Counts Data: Berat	8
6.3.2.2	Raw Traffic Counts Data: Corovoda	12
6.3.2.3	Raw Traffic Counts Data: Fier	20
6.3.2.4	Raw Traffic Counts Data: Korca	26

### LIST OF TABLES

Table 6.3.1-1	Inventory of Settlements within the Socioeconomic Study Area .....	5
Table 6.3.2-1	Berat - Ure.....	8
Table 6.3.2-2	Ure - Berat.....	9
Table 6.3.2-3	Skrapar - Berat.....	10
Table 6.3.2-4	Berat - Skrapar.....	11
Table 6.3.2-5	Corovode-Berat.....	12
Table 6.3.2-6	Bargullas-Berat .....	13
Table 6.3.2-7	Berat - Corovode.....	14
Table 6.3.2-8	Berat - Bargullas .....	15
Table 6.3.2-9	Berat - Polican.....	16
Table 6.3.2-10	Corovode - Kakruke .....	17
Table 6.3.2-11	Kakruke - Corovode .....	18
Table 6.3.2-12	Polican – Berat.....	19
Table 6.3.2-13	Drenovica - Fier.....	20
Table 6.3.2-14	Fier - Drenovica.....	21
Table 6.3.2-15	Fier - Topoja.....	22
Table 6.3.2-16	Daullas - Fier.....	23
Table 6.3.2-17	Fier - Daullas.....	24
Table 6.3.2-18	Totoja – Fier .....	25
Table 6.3.2-19	Kamenice - Korce.....	26
Table 6.3.2-20	Korce - Kamenice.....	27
Table 6.3.2-21	Rr. Nazionale - Vithkuq .....	28
Table 6.3.2-22	Rr. Nazionale - Korce-Erseke .....	29

### LIST OF FIGURES

Figure 6.3.1-1	Overview of Study Area Socioeconomic Characteristics .....	4
----------------	--	---

 		Page 3 of 29				
		Area Code	Comp. Code	System Code	Disc. Code	Doc.- Type
Project Title:	<b>Trans Adriatic Pipeline – TAP</b>	<b>AAL00-ERM-641-Y-TAE-1008</b> <b>Rev.: 03 / at24</b>				
Document Title:	<b>ESIA Albania Annex 6.3 - Onshore Socioeconomic Environment</b>					

### 6.3 Onshore Socioeconomic Environment

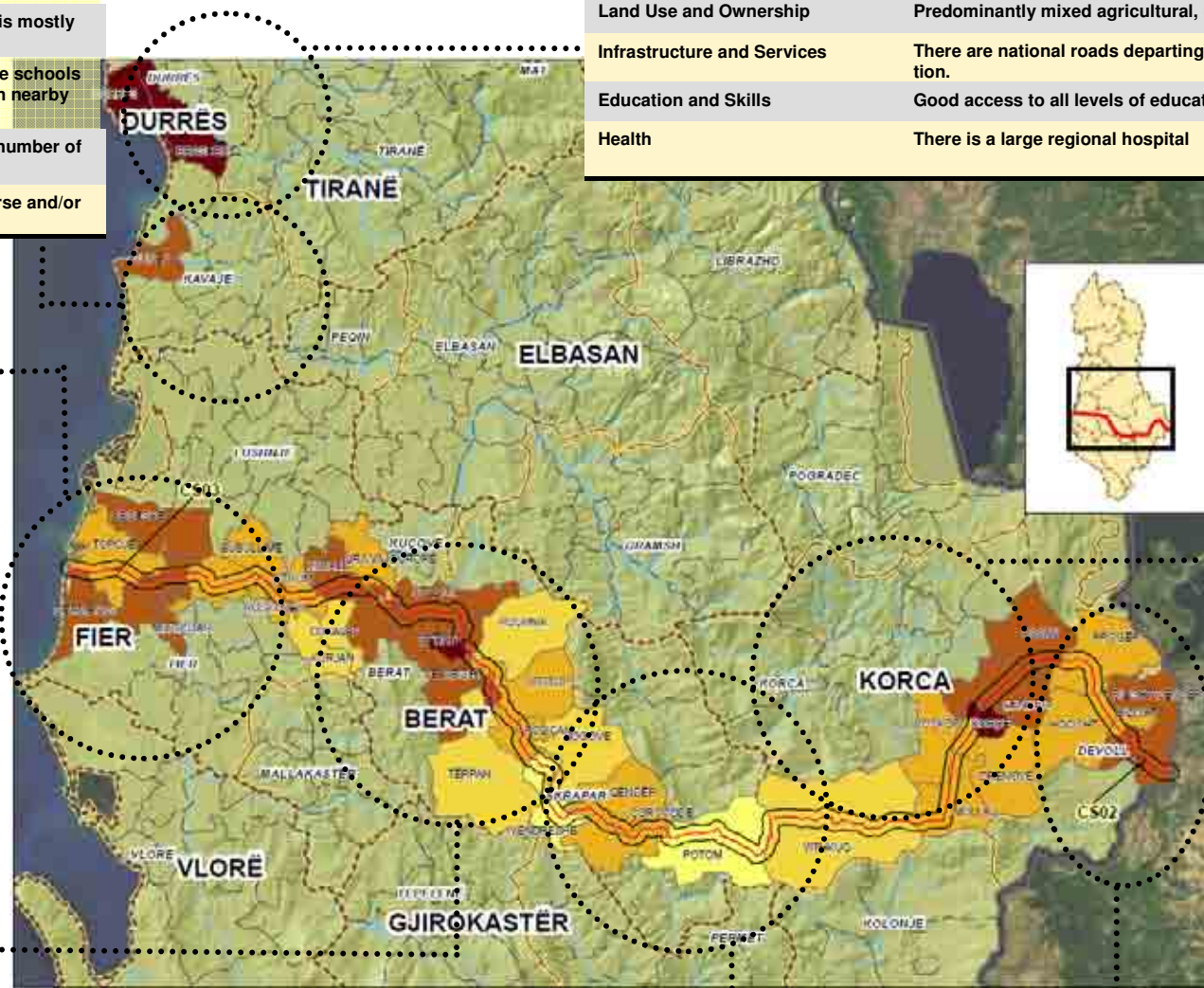
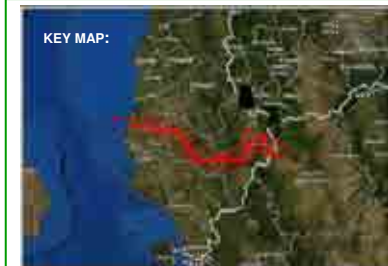
#### 6.3.1 Overview of Study Area and Inventory of Settlements



District - Kavaja	
Communes and Municipalities	Synej
Number of Settlements	1
Environment/ Climate	Climate is mild in winter and hot in the summer, some small hills and rainy days in the winter.
Demographics	Mid size Commune with some villages that range from 500 to 2000 inhabitants.
Economic Activities	Reliant on agricultural production dominated cultivation of fruit trees. Important tourism related service industry
Land Use and Ownership	Predominantly mixed agricultural and urban . Agricultural land is mostly privately owned.
Infrastructure and Services	Settlements are well connected by road and all settlements have schools and health clinics, in addition to access to hospitals services in nearby Kavaje and Durres.
Education and Skills	Higher number of secondary schools correlating with the high number of population educated to secondary level.
Health	Every settlement has a permanent health care professional (nurse and/or doctor)

District - Fier	
Communes and Municipalities	Kurjan, Libofshë, Mbrostar, Qendër, Roskovec, Strum, Topoje, Bubullimë, Kuman, Dermenas
Number of Settlements	16
Environment/ Climate	From foothills to the coastal plain. Osum-Semani and Vjosa
Demographics	All settlements are relatively large with populations ranging from 570-3351. Still predominantly rural settlements.
Economic Activities	Reliant on mixed agricultural production dominated by raising cattle and sheep and growing vegetable and seasonal fruit
Land Use and Ownership	Predominantly mixed agricultural, urban and industrial. All agricultural land is privately owned although residents reported issues obtaining land tenure documents.
Infrastructure and Services	Settlements are well connected by road and all villages have access to public transport. All settlements have schools and a health clinic, in addition to access to hospital services in nearby Fier.
Education and Skills	High number of secondary schools correlating with the high number of population educated to secondary level.
Health	Every settlement has a permanent health care professional (nurse and/or doctor).

District - Berat	
Communes and Municipalities	Berat, Cukalat, Kutalli, Otlak, Poshnjë, Roshnik, Tërpan, Ura Vajgurore, Velabisht, Vërtop,
Number of Settlements	26
Environment/ Climate	Steep mountains give way to increasingly flatter land and settlements located in foothills and narrow valleys.
Demographics	Variety of settlement sizes from small isolated villages with a population of 30, villages of between 300 and 500 and large towns of between 1550 and 65000 people.
Economic Activities	Large areas of vines, fruit trees and olive trees. Two large population centres and large towns with mixed economies.
Land Use and Ownership	Large areas of permanent crops interspersed with seasonal crops. Mixed land use in the larger towns and cities including agricultural and industrial. Agricultural land is owned.
Infrastructure and Services	Infrastructure and services are mixed, but the majority of villages have asphalt roads and access to services. Most residents must travel to Berat for advanced care or educational needs.
Education and Skills	Has one of two universities in the social study area and the highest number of secondary schools. High number of population educated to secondary level.
Health	Good access to clinics and professional care.



District - Durres	
Communes and Municipalities	Durres Municipality, Rrashbull Commune
Number of Settlements	3 (including Durres town)
Environment/ Climate	Climate is mild in winter and hot in the summer, some small hills and rainy days in the winter.
Demographics	Durres is the second largest city in Albania and has over 215,000 inhabitants. Increasing number of people are returning from abroad due to economic crisis.
Economic Activities	Second largest urban area in Albania with a very active economy based on tourism and services. The port of Durres is the largest and most important port in Albania.
Land Use and Ownership	Predominantly mixed agricultural, urban and industrial. Large number of hotels, restaurants and coffee shops.
Infrastructure and Services	There are national roads departing from Durres towards Tirana and Kavaje. The interurban road network is in good condition.
Education and Skills	Good access to all levels of education including university and vocational.
Health	There is a large regional hospital

District - Korça	
Communes and Municipalities	Drenovë, Mollaj, Pojan, Qendër, Vithkuq
Number of Settlements	11
Environment/ Climate	Areas of open wide valleys with flat or undulating land used for agriculture.
Demographics	Medium sized settlements located in close proximity of each other with populations ranging from 300 to over 2500.
Economic Activities	Agricultural based dominated by the production of apples and soft fruit. Small-scale animal husbandry and some seasonal crops.
Land Use and Ownership	Permanent crops dominate the landscape in most areas intermixed with seasonal crops. Small areas of grazing. All residents own their own land.
Infrastructure and Services	High level of services and good quality infrastructure. Roads are asphalt and there are high levels of access to schools, hospitals and other services. Car ownership is high, villages are connected to the internet and houses have landlines and/or mobile phones.
Education and Skills	Has one of two universities in the social study area. Only one secondary in the district (within the social study area). High literacy rates.
Health	No permanent doctors within the social study area.

District - Skrapar	
Communes and Municipalities	Bogove, Çorovoda, Poliçan, Potom, Qendër, Vendreshe
Number of Settlements	17
Environment/ Climate	Mountainous reliefs, broken terrain and high contrasts. Mature old grown forests, subalpine grasslands and River Osumit
Demographics	Predominantly small settlements, many of which are isolated or difficult to access. Population ranges from 30 to 587 with one larger city of 8907.
Economic Activities	Seasonal crop based with small-scale permanent crops (vines and olives) high levels of subsistence farming.
Land Use and Ownership	Grazing land, forest and base rock in the mountainous areas with seasonal crops surrounding the villages. Agricultural land is privately owned with forests and mountains owned by the state.
Infrastructure and Services	Infrastructure varies, but most villages are connected via gravel or dirt roads. Services are limited and residents must travel to access healthcare and education. Tele-communications are also limited.
Education and Skills	Only one secondary school in the social study area and some settlements without any schools.
Health	Highest number of settlements without health facilities and lowest access to professional care

District - Devoll	
Communes and Municipalities	Bilisht Qender, Hoçist, Bilisht, Progër
Number of Settlements	8
Environment/ Climate	Surrounding mountains with settlements and farmland located along valley floors.
Demographics	Relatively large settlements with populations ranging from 517 to 9946.
Economic Activities	Permanent apple production the key activity with small-scale dairy and seasonal farming.
Land Use and Ownership	Permanent and seasonal crop mix. All agricultural land is owned.
Infrastructure and Services	Roads are good and residents have access to services. Car ownership is high and villages have access to tele-communications.
Education and Skills	Has the highest number of post-secondary educated people and broad access to primary and secondary schools
Health	Highest number of hospitals and best access to services and professional care.

CLIENT:	TRANS ADRIATIC PIPELINE		03	13/12/2012	Issued for Information	JUC	PIB	SA
PROJECT:	Trans Adriatic Pipeline (TAP)		REV	DATE	ISSUE, SCOPE OF REVISION	PREP	CHECK	APR.
	Albania ESIA Report		TITLE:					
			ANNEX 6.3.1					
			Overview of Study Area					
			Socioeconomic Characteristics					
			SCALE	PROJECT	DRAWING NO:	SHEET OF		
			No scale	0131979	Figure 6.3.1-1	4/29		

 		Page 5 of 29				
		Area Code	Comp. Code	System Code	Disc. Code	Doc.-Type
Project Title:	<b>Trans Adriatic Pipeline – TAP</b>	<b>AAL00-ERM-641-Y-TAE-1008</b> <b>Rev.: 03 / at24</b>				
Document Title:	<b>ESIA Albania Annex 6.3 - Onshore Socioeconomic Environment</b>					

**Table 6.3.1-1 Inventory of Settlements within the Socioeconomic Study Area**

<i>Region</i>	<i>District</i>	<i>Communes / Municipality*</i>	<i>Settlement**</i>	<i>Population (2008)</i>			
Korça	Devoll	Bilisht Qender	Vishocicë	925			
			Kapshtice**	-			
			Trestenik	817			
			Kuç	517			
			Hoçisht	Land Only	--		
			Bilisht	Bilisht	9,946		
			Progër	Cangonj	1,329		
				Vranisht	1,425		
				Progër	1,004		
				Mançurisht*	808		
				Korça	Pojan	Zëmbiak	1,772
						Plasë*	1,764
						Terrovë	368
						Pendavinj	634
						Qendër	Çiflik
	Qendër			Bulgarec	2534		
			Malavec	301			
			Shamoll	776			
			Drenovë	Ravonik	1,025		
	Voskop		Turan	340			
			Land Only	-			
			Pulahë	652			
	Vithkuq		Floq*	1,072			
			Shtylle**	-			
	Potom		Backë	425			
			Potom	250			
			Staravek	68			
			Helmesi	20			
			Qafë	33			
			Çorovoda	Çorovoda	8,907		
	Qender		Arizaj	345			
			Buzuk	361			
			Çerenishte	279			
			Munushtir	472			
			Orizaj	345			
			Osoje	261			
			Polenë	101			
			Vendreshe		Therpel	587	
					Vëndreshë e vogël	184	
					Ustië	142	
	Valë	142					
	Bogove	Land Only (tbc)	-				
Poliçan	Land Only	-					
Berat	Vërtop	Bregas	503				
		Fushë peshtan	794				
		Mbrakull***	1,213				
		Vërtop	445				
		Vodicë	1,159				

 Trans Adriatic Pipeline		Page 6 of 29				
		Area Code	Comp. Code	System Code	Disc. Code	Doc.-Type
Project Title:	Trans Adriatic Pipeline – TAP					AAL00-ERM-641-Y-TAE-1008 Rev.: 03 / at24
Document Title:	ESIA Albania Annex 6.3 - Onshore Socioeconomic Environment					

Region	District	Communes / Municipality*	Settlement**	Population (2008)
			Zgërbonjë	407
			Malinat	726
	Berat	Berat	Berat	65,000
			Uznovë	5,809
	Velabisht	Duhas	Duhas	1,469
			Kodras*	196
	Otllak	Moravë	Moravë	2,534
			Otllak***	747
			Ullinjas***	705
	Ura Vajgurore	Guri i bardhë	Guri i bardhë	30
			Konisbaltë	805
			Ura vajgurore	7,915
			Vokopolë	365
	Poshnjë	Poshnjë	Poshnjë	2,450
			Çiflik	1,550
	Cukalat	Only land		-
	Kutalli	Drenovicë	Drenovicë	3,075
			Kutalli	1,447
			Pobrat	1,686
			Protoduar	110
			Rërëz-kumarak	1,183
			Sqepur	608
	Roshnik	Land Only		-
Fier	Fier	Strum	Strum	3,000
			Kurjan	--
			Roskovec	Jagodine**
			Kuman	Marinez**
			Mbrostar	Kallm i vogël
				Mbrostar ura
				Petovë
				Verri
				Imesht *
				1,256
				3,351
				1,978
				1,035
				1,560
			Libofshë	Rreth Libofshë
				1,870
			Qendër	Mujalli
				683
			Dermentas <sup>1</sup>	Land only
				--
			Topoje	Kavaklli
				765
				Seman
				948
				Seman i ri
				1,276
				Sheq-marinas
				1,140
				Gjokalli**
				N/A
	Lushnjë	Bubullimë	Vajkan*	1,275

<sup>1</sup> There are a number of settlement's outside of the 2 km corridor in Dermentas and Topoje communes that were invited to participate in community consultation during ESIA main phase but due to elections' disputes meetings were aborted. These include: Dermentas, Hoxare, Hamil, Sulaj and Fushe in Topoje commune.



 		Page 7 of 29					
		Area Code	Comp. Code	System Code	Disc. Code	Doc.-Type	Ser. No.
Project Title:	<b>Trans Adriatic Pipeline – TAP</b>		<b>AAL00-ERM-641-Y-TAE-1008</b> <b>Rev.: 03 / at24</b>				
Document Title:	<b>ESIA Albania Annex 6.3 - Onshore Socioeconomic Environment</b>						

<b>Region</b>	<b>District</b>	<b>Communes / Municipality*</b>	<b>Settlement**</b>	<b>Population (2008)</b>
Tirana	Kavaja	Synej	Rrakull**	1,984
	Durres	Durres	Durres **	105,510 (2011 census)
Durres		Rrashbull	Arapaj**	5,122
			Shkallnur **	3,730

\* New settlement considered after minor rerouting during ESIA review process. Not surveyed or consulted.

\*\* Settlements outside of the 2 km pipeline route corridor but considered because of road access program, grid connection or pipe yard.

Source: ERM (2012)

  Trans Adriatic Pipeline		Page 8 of 29									
		Area Code	Comp. Code	System Code	Disc. Code	Doc.-Type	Ser. No.				
Project Title:	Trans Adriatic Pipeline – TAP					AAL00-ERM-641-Y-TAE-1008 Rev.: 03 / at24					
Document Title:	ESIA Albania Annex 6.3 - Onshore Socioeconomic Environment										

### 6.3.2 Raw Traffic Counts Data

#### 6.3.2.1 Raw Traffic Counts Data: Berat

**Table 6.3.2-1 Berat - Ure**

Location a Vajgurore :  
 Date 23-01 : \_\_\_\_2012  
 Day Monday

Direction Code 150  
 Direction from Berat  
 Direction to Ura vajgurore

Hour	1	2	3	4	5	6	7	8	9	10	Total
	Motor Cycle	Private Car (sedan, van)	Private Microbus	Taxi	Small (Pick Up) Truck	Medium Truck (<5 tons)	Large Truck (>=5 tons)	Minibus & Medium Bus	Large Bus	Agriculture Machinery	
06:00 - 07:00	1	60	9	26	5	4	1	4	5	0	115
07:00 - 08:00	5	110	12	24	7	4	1	0	12	0	175
08:00 - 09:00	10	108	22	30	8	3	5	3	5	0	194
09:00 - 10:00	14	175	12	30	3	2	4	0	9	1	250
10:00 - 11:00	8	179	24	24	4	8	6	0	6	0	259
11:00 - 12:00	4	177	23	28	4	6	11	1	7	0	261
12:00 - 13:00	5	169	16	20	8	4	2	0	6	0	230
13:00 - 14:00	3	174	20	15	9	5	7	1	8	1	243
14:00 - 15:00	2	110	32	8	0	0	6	2	9	0	169
15:00 - 16:00	2	96	26	10	14	3	7	2	2	0	162
16:00 - 17:00	3	105	24	9	6	1	4	1	4	0	157
17:00 - 18:00	3	90	13	7	6	2	3	1	6	0	131
18:00 - 19:00	2	45	8	3	7	1	1	0	2	0	69
19:00 - 20:00	0	25	6	2	5	1	0	0	3	0	42
20:00 - 21:00	0	23	3	2	1	0	2	0	1	0	32
21:00 - 22:00	0	12	1	0	1	0	2	0	2	0	18
<b>Total Number of Vehicle</b>											
Veh 16 hrs	62	1.658	251	238	88	44	62	15	87		2.507
<b>Total Passenger Car Units</b>											
PCU Rate	0,33	1,00	1,25	1,00	1,00	1,50	2,00	1,25	1,50	2,00	
PCU 16 hrs	20	1.658	314	238	88	66	124	19	131	0	2.657



 		Page 9 of 29					
		Area Code	Comp. Code	System Code	Disc. Code	Doc.-Type	Ser. No.
Project Title: <b>Trans Adriatic Pipeline – TAP</b>		<b>AAL00-ERM-641-Y-TAE-1008</b> <b>Rev.: 03 / at24</b>					
Document Title: <b>ESIA Albania Annex 6.3 - Onshore Socioeconomic Environment</b>							

**Table 6.3.2-2 Ure - Berat**

Location                      Ura vajgurore                      Direction Code 143  
Date                              23-01 : \_\_\_\_2012                      Direction from Ura vajgurore  
Day                                Monday                                      Direction to Berat

our	1	2	3	4	5	6	7	8	9	10	Total
	Motor Cycle	Private Car (sedan, van)	Private Microbus	Taxi	Small (Pick Up) Truck	Medium Truck (<5 tons)	Large Truck (>=5 tons)	Minibus& Medium Bus	Large Bus	Agriculture Machinery	
06:00 - 07:00	4	32	11	0	1	4	1	0	2	0	55
07:00 - 08:00	6	100	16	20	4	6	3	1	9	1	166
08:00 - 09:00	5	155	19	21	3	7	3	2	8	0	223
09:00 - 10:00	7	188	35	20	6	3	11	1	7	0	278
10:00 - 11:00	6	174	22	24	2	4	6	4	5	0	247
11:00 - 12:00	8	154	21	21	8	3	4	2	5	0	226
12:00 - 13:00	10	156	20	20	5	6	7	0	7	0	231
13:00 - 14:00	3	151	17	14	4	9	3	1	7	0	209
14:00 - 15:00	4	110	23	17	14	15	3	2	9	0	197
15:00 - 16:00	5	110	19	11	15	12	13	3	5	0	193
16:00 - 17:00	2	110	9	10	5	16	10	3	7	0	172
17:00 - 18:00	0	70	13	23	13	13	14	9	9	4	168
18:00 - 19:00	0	38	13	22	9	9	7	9	9	0	116
19:00 - 20:00	2	46	5	22	3	3	5	2	2	0	90
20:00 - 21:00	1	44	2	18	3	4	5	2	0	0	79
21:00 - 22:00	0	0	0	0	0	0	0	0	0	0	0
<b>Total Number of Vehicle</b>											
Veh 16 hrs	63	1.638	245	263	95	114	95	41	91		2.650
<b>Total Passenger Car Units</b>											
PCU Rate	0,33	1,00	1,25	1,00	1,00	1,50	2,00	1,25	1,50	2,00	
PCU 16 hrs	21	1.638	306	263	95	171	190	51	137	0	2.872

 		Page 10 of 29									
		Area Code	Comp. Code	System Code	Disc. Code	Doc.-Type	Ser. No.				
Project Title:	Trans Adriatic Pipeline – TAP					AAL00-ERM-641-Y-TAE-1008 Rev.: 03 / at24					
Document Title:	ESIA Albania Annex 6.3 - Onshore Socioeconomic Environment										

**Table 6.3.2-3 Skrapar - Berat**

Location      Uzrove :  
Date            24,01 : \_\_\_\_2012  
Day             Tuesday

Direction Code 133  
Direction from Skrapar  
Direction to Berat

Hour	1	2	3	4	5	6	7	8	9	10	Total
	Motor Cycle	Private Car (sedan, van)	Private Microbus	Taxi	Small (Pick Up) Truck	Medium Truck (<5 tons)	Large Truck (>=5 tons)	Minibus & Medium Bus	Large Bus	Agriculture Machinery	
06:00 - 07:00	2	10	3	2	2	2	2	1	3	0	27
07:00 - 08:00	10	19	3	1	0	0	1	2	1	0	37
08:00 - 09:00	7	37	4	0	1	1	0	2	2	0	54
09:00 - 10:00	1	49	4	1	2	0	0	2	2	0	61
10:00 - 11:00	0	38	11	2	1	0	3	0	1	0	56
11:00 - 12:00	7	53	6	1	3	2	1	1	0	0	74
12:00 - 13:00	19	1	1	0	0	0	1	0	0	0	22
13:00 - 14:00	3	22	3	1	1	0	0	1	4	0	35
14:00 - 15:00	3	37	3	0	2	3	2	0	1	0	51
15:00 - 16:00	4	41	3	2	3	1	6	2	0	0	62
16:00 - 17:00	2	20	3	0	0	2	5	0	1	0	33
17:00 - 18:00	1	22	2	0	0	1	3	0	1	0	30
18:00 - 19:00	0	22	2	3	1	2	20	1	3	0	54
19:00 - 20:00	1	9	2	3	1	1	5	1	1	0	24
20:00 - 21:00	1	14	2	3	1	2	4	0	1	0	28
21:00 - 22:00	0	7	0	3	1	3	4	0	1	0	19
<b>Total Number of Vehicle</b>											
Veh 16 hrs	61	401	52	22	19	20	57	13	22		667
<b>Total Passenger Car Units</b>											
PCU Rate	0,33	1,00	1,25	1,00	1,00	1,50	2,00	1,25	1,50	2,00	
PCU 16 hrs	20	401	65	22	19	30	114	16	33	0	720

Project Title: **Trans Adriatic Pipeline – TAP**  
 Document Title: **ESIA Albania Annex 6.3 - Onshore Socioeconomic Environment**

**AAL00-ERM-641-Y-TAE-1008**  
**Rev.: 03 / at24**

**Table 6.3.2-4 Berat - Skrapar**

Location Uznove :  
 Date 24,01 : \_\_\_\_2012  
 Day Tuesday

Direction Code 133  
 Direction from Berat  
 Direction to Skrapar

Hour	1	2	3	4	5	6	7	8	9	10	Total
	Motor Cycle	Private Car (sedan, van)	Private Microbus	Taxi	Small (Pick Up) Truck	Medium Truck (<5 tons)	Large Truck (>=5 tons)	Minibus & Medium Bus	Large Bus	Agriculture Machinery	
06:00 - 07:00	1	9	3	0	0	2	0	0	1	0	16
07:00 - 08:00	5	19	3	2	5	1	1	2	2	0	40
08:00 - 09:00	4	35	7	1	1	2	1	0	2	0	53
09:00 - 10:00	9	36	4	1	3	0	0	1	1	0	55
10:00 - 11:00	3	38	6	2	2	2	7	3	0	0	63
11:00 - 12:00	3	56	5	2	0	1	3	0	1	0	71
12:00 - 13:00	6	47	4	1	0	0	0	2	3	0	63
13:00 - 14:00	5	38	7	0	0	6	1	3	3	0	63
14:00 - 15:00	4	36	4	0	3	1	3	1	1	0	53
15:00 - 16:00	1	33	7	3	1	1	0	0	2	0	48
16:00 - 17:00	3	32	6	0	2	1	2	1	1	0	48
17:00 - 18:00	1	17	3	2	3	0	0	1	3	0	30
18:00 - 19:00	1	11	2	1	2	0	3	0	2	0	22
19:00 - 20:00	1	9	1	0	1	1	3	1	1	0	18
20:00 - 21:00	0	7	1	0	0	2	4	0	1	0	15
21:00 - 22:00	0	8	1	1	2	0	4	0	1	0	17
<b>Total Number of Vehicle</b>											
Veh 16 hrs	47	431	64	16	25	20	32	15	25		675
<b>Total Passenger Car Units</b>											
PCU Rate	0,33	1,00	1,25	1,00	1,00	1,50	2,00	1,25	1,50	2,00	
PCU 16 hrs	16	431	80	16	25	30	64	19	38	0	718

Project Title: **Trans Adriatic Pipeline – TAP**  
Document Title: **ESIA Albania Annex 6.3 - Onshore Socioeconomic Environment**

**AAL00-ERM-641-Y-TAE-1008**  
Rev.: 03 / at24

### 6.3.2.2 Raw Traffic Counts Data: Corovoda

**Table 6.3.2-5 Corovode-Berat**

Location      Corovode :  
Date            26-gen : \_\_\_\_2012  
Day             Thursday

Direction Code 136  
Direction from Corovode  
Direction to      Berat

our	1	2	3	4	5	6	7	8	9	10	Total
	Motor Cycle	Private Car (sedan, van)	Private Microbus	Taxi	Small (Pick Up) Truck	Medium Truck (<5 tons)	Large Truck (>=5 tons)	Minibus & Medium Bus	Large Bus	Agriculture Machinery	
06:00 - 07:00	0	3	1	0	0	0	0	1	2	0	7
07:00 - 08:00	0	8	1	0	2	0	0	0	1	0	12
08:00 - 09:00	0	10	1	0	3	0	0	1	0	0	15
09:00 - 10:00	0	10	0	0	0	0	2	0	0	0	12
10:00 - 11:00	1	4	1	0	1	1	0	0	1	0	9
11:00 - 12:00	1	6	0	0	1	3	0	0	1	0	12
12:00 - 13:00	0	5	1	0	3	0	0	0	0	0	9
13:00 - 14:00	1	6	1	0	0	0	0	1	0	0	9
14:00 - 15:00	0	7	0	0	2	0	0	1	0	0	10
15:00 - 16:00	0	3	0	0	3	2	0	1	0	0	9
16:00 - 17:00	0	5	0	0	1	1	0	0	0	0	7
17:00 - 18:00	0	3	0	0	2	0	0	1	0	0	6
18:00 - 19:00	0	2	0	0	2	1	0	0	0	0	5
19:00 - 20:00	0	3	1	0	1	1	0	0	0	0	6
20:00 - 21:00	0	1	0	0	1	1	0	0	0	0	3
21:00 - 22:00	0	2	0	0	0	1	0	0	0	0	3
<b>Total Number of Vehicle</b>											
Veh 16 hrs	3	78	7	0	22	11	2	6	5		134
<b>Total Passenger Car Units</b>											
PCU Rate	0,33	1,00	1,25	1,00	1,00	1,50	2,00	1,25	1,50	2,00	
PCU 16 hrs	1	78	9	0	22	17	4	8	8	0	145

Waypoint;005  
426926  
4487624

**Table 6.3.2-6 Bargullas-Berat**

Location Bargullas :  
 Date 24-gen : \_\_\_\_2012  
 Day Tuesday

Direction Code 144  
 Direction from Bargullas  
 Direction to Berat

our	1	2	3	4	5	6	7	8	9	10	Total
	Motor Cycle	Private Car (sedan, van)	Private Microbus	Taxi	Small (Pick Up) Truck	Medium Truck (<5 tons)	Large Truck (>=5 tons)	Minibus& Medium Bus	Large Bus	Agriculture Machinery	
06:00 - 07:00	0	7	1	0	1	0	0	1	1	0	11
07:00 - 08:00	0	9	1	0	2	1	0	2	1	0	16
08:00 - 09:00	0	12	1	0	1	0	0	1	0	0	15
09:00 - 10:00	0	9	0	0	1	1	0	1	1	0	13
10:00 - 11:00	0	12	0	0	0	1	0	0	0	0	13
11:00 - 12:00	1	12	1	0	2	3	2	0	1	0	22
12:00 - 13:00	0	13	0	0	2	1	1	0	1	0	18
13:00 - 14:00	0	6	1	0	0	1	0	0	0	0	8
14:00 - 15:00	0	5	0	0	4	0	0	0	0	0	9
15:00 - 16:00	0	8	0	0	4	1	2	1	0	0	16
16:00 - 17:00	0	5	0	0	4	1	0	1	1	0	12
17:00 - 18:00	0	4	0	0	1	0	0	0	0	0	5
18:00 - 19:00	0	4	0	0	2	0	0	1	0	0	7
19:00 - 20:00	0	2	0	0	0	0	0	0	0	0	2
20:00 - 21:00	0	2	0	0	1	0	0	0	0	0	3
21:00 - 22:00	0	1	0	0	0	1	0	0	0	0	2
<b>Total Number of Vehicle</b>											
<b>Veh 16 hrs</b>	<b>1</b>	<b>111</b>	<b>5</b>	<b>0</b>	<b>25</b>	<b>11</b>	<b>5</b>	<b>8</b>	<b>6</b>		<b>172</b>
<b>Total Passenger Car Units</b>											
<b>PCU Rate</b>	0,33	1,00	1,25	1,00	1,00	1,50	2,00	1,25	1,50	2,00	
<b>PCU 16 hrs</b>	<b>0</b>	<b>111</b>	<b>6</b>	<b>0</b>	<b>25</b>	<b>17</b>	<b>10</b>	<b>10</b>	<b>9</b>	<b>0</b>	<b>188</b>

Waypoint:003  
 423424  
 4496391



Project Title: **Trans Adriatic Pipeline – TAP**

 Document Title: **ESIA Albania Annex 6.3 - Onshore Socioeconomic Environment**
**AAL00-ERM-641-Y-TAE-1008**  
**Rev.: 03 / at24**
**Table 6.3.2-7 Berat - Corovode**

 Location Corovode :  
 Date 26-gen : \_\_\_\_2012  
 Day Thursday

 Direction Code 136  
 Direction from Berat  
 Direction to Corovode

our	1	2	3	4	5	6	7	8	9	10	Total
	Motor Cycle	Private Car (sedan, van)	Private Microbus	Taxi	Small (Pick Up) Truck	Medium Truck (<5 tons)	Large Truck (>=5 tons)	Minibus& Medium Bus	Large Bus	Agriculture Machinery	
06:00 - 07:00	0	2	0	0	1	0	0	1	0	0	4
07:00 - 08:00	0	3	0	0	2	0	1	1	0	0	7
08:00 - 09:00	0	4	1	0	0	1	0	1	0	0	7
09:00 - 10:00	1	4	1	0	2	1	0	0	0	0	9
10:00 - 11:00	0	9	0	0	1	1	1	0	1	0	13
11:00 - 12:00	0	4	1	0	3	1	0	0	0	0	9
12:00 - 13:00	0	5	0	0	2	0	2	1	1	0	11
13:00 - 14:00	0	4	0	0	1	2	1	2	1	0	11
14:00 - 15:00	2	5	0	0	0	1	4	0	0	0	12
15:00 - 16:00	0	4	0	1	0	0	0	1	0	0	6
16:00 - 17:00	0	3	1	0	1	0	0	1	0	0	6
17:00 - 18:00	0	5	0	0	0	1	0	0	1	0	7
18:00 - 19:00	1	3	0	0	1	0	0	0	0	1	6
19:00 - 20:00	0	5	0	0	0	0	0	1	0	0	6
20:00 - 21:00	1	2	1	0	0	0	0	0	0	0	4
21:00 - 22:00	0	4	0	0	0	0	0	0	0	0	4
<b>Total Number of Vehicle</b>											
<b>Veh 16 hrs</b>	5	66	5	1	14	8	9	9	4		122
<b>Total Passenger Car Units</b>											
PCU Rate	0,33	1,00	1,25	1,00	1,00	1,50	2,00	1,25	1,50	2,00	
<b>PCU 16 hrs</b>	2	66	6	1	14	12	18	11	6	0	136

 Waypoint:005  
 426926  
 4487624

Project Title: **Trans Adriatic Pipeline – TAP**

 Document Title: **ESIA Albania Annex 6.3 - Onshore Socioeconomic Environment**
**AAL00-ERM-641-Y-TAE-1008**  
 Rev.: 03 / at24

**Table 6.3.2-8 Berat - Bargullas**

 Location Bargullas :  
 Date 24-gen : \_\_\_\_2012  
 Day Tuesday

 Direction Code 144  
 Direction from Berat  
 Direction to Bargullas

our	1	2	3	4	5	6	7	8	9	10	Total
	Motor Cycle	Private Car (sedan, van)	Private Microbus	Taxi	Small (Pick Up) Truck	Medium Truck (<5 tons)	Large Truck (>=5 tons)	Minibus& Medium Bus	Large Bus	Agriculture Machinery	
06:00 - 07:00	0	5	2	0	2	2	0	1	1	0	13
07:00 - 08:00	0	6	1	0	3	2	0	2	0	0	14
08:00 - 09:00	0	11	1	0	5	2	0	1	0	0	20
09:00 - 10:00	1	9	0	0	2	0	1	0	1	0	14
10:00 - 11:00	0	17	1	0	2	0	1	0	0	0	21
11:00 - 12:00	0	9	0	0	3	0	2	1	0	0	15
12:00 - 13:00	0	8	1	0	3	0	1	0	1	0	14
13:00 - 14:00	0	9	1	0	2	1	0	0	0	0	13
14:00 - 15:00	1	12	0	0	3	0	0	1	0	0	17
15:00 - 16:00	0	6	1	0	0	0	0	0	1	0	8
16:00 - 17:00	0	5	0	0	1	0	2	0	1	0	9
17:00 - 18:00	0	5	0	1	1	0	0	0	1	0	8
18:00 - 19:00	0	8	0	0	0	0	1	0	1	0	10
19:00 - 20:00	1	4	0	0	1	0	0	0	1	0	7
20:00 - 21:00	0	3	0	0	1	0	0	0	0	0	4
21:00 - 22:00	0	2	0	1	0	0	1	0	0	0	4
<b>Total Number of Vehicle</b>											
<b>Veh 16 hrs</b>	<b>3</b>	<b>119</b>	<b>8</b>	<b>2</b>	<b>29</b>	<b>7</b>	<b>9</b>	<b>6</b>	<b>8</b>		<b>191</b>
<b>Total Passenger Car Units</b>											
<b>PCU Rate</b>	0,33	1,00	1,25	1,00	1,00	1,50	2,00	1,25	1,50	2,00	
<b>PCU 16 hrs</b>	<b>1</b>	<b>119</b>	<b>10</b>	<b>2</b>	<b>29</b>	<b>11</b>	<b>18</b>	<b>8</b>	<b>12</b>	<b>0</b>	<b>209</b>

Waypoint:003

423424

4496391

 		Page 16 of 29									
		Area Code	Comp. Code	System Code	Disc. Code	Doc.-Type	Ser. No.				
Project Title:	Trans Adriatic Pipeline – TAP					AAL00-ERM-641-Y-TAE-1008					
Document Title:	ESIA Albania Annex 6.3 - Onshore Socioeconomic Environment					Rev.: 03 / at24					

**Table 6.3.2-9 Berat - Polican**

Location : a vajguore :  
Date : 23-01 : \_\_\_\_2012  
Day : Monday

Direction Code 143  
Direction from Berat  
Direction to Polican

our	1	2	3	4	5	6	7	8	9	10	Total
	Motor Cycle	Private Car (sedan, van)	Private Microbus	Taxi	Small (Pick Up) Truck	Medium Truck (<5 tons)	Large Truck (>=5 tons)	Minibus& Medium Bus	Large Bus	Agriculture Machinery	
06:00 - 07:00	1	13	0	0	11	0	0	2	1	0	28
07:00 - 08:00	3	41	1	0	16	1	0	0	0	0	62
08:00 - 09:00	2	20	0	0	6	6	2	2	3	1	42
09:00 - 10:00	6	18	0	0	1	1	1	5	1	0	33
10:00 - 11:00	1	8	1	0	2	0	1	1	3	0	17
11:00 - 12:00	3	24	1	0	1	5	0	0	1	0	35
12:00 - 13:00	1	25	3	0	2	0	1	0	4	0	36
13:00 - 14:00	1	17	0	0	3	1	2	2	1	0	27
14:00 - 15:00	1	26	0	0	0	1	0	0	2	0	30
15:00 - 16:00	0	16	0	1	0	2	0	0	2	0	21
16:00 - 17:00	1	10	0	0	5	0	1	0	0	0	17
17:00 - 18:00	2	17	0	0	2	0	0	0	1	0	22
18:00 - 19:00	1	14	1	0	0	0	0	0	1	0	17
19:00 - 20:00	1	11	0	0	0	0	0	0	1	0	13
20:00 - 21:00	0	4	0	1	0	0	0	0	1	0	6
21:00 - 22:00	0	3	0	0	0	0	0	0	0	0	3
<b>Total Number of Vehicle</b>											
Veh 16 hrs	24	267	7	2	49	17	8	12	22		409
<b>Total Passenger Car Units</b>											
PCU Rate	0,33	1,00	1,25	1,00	1,00	1,50	2,00	1,25	1,50	2,00	
PCU 16 hrs	8	267	9	2	49	26	16	15	33	0	424

Waypoint:001  
423427  
4496395

**Table 6.3.2-10 Corovode - Kakruke**

Location Kakruke :  
 Date 25-gen : \_\_\_\_2012  
 Day /Wednesday

Direction Code 135  
 Direction from Corovode  
 Direction to Kakruke

our	1	2	3	4	5	6	7	8	9	10	Total
	Motor Cycle	Private Car (sedan, van)	Private Microbus	Taxi	Small (Pick Up) Truck	Medium Truck (<5 tons)	Large Truck (>=5 tons)	Minibus& Medium Bus	Large Bus	Agriculture Machinery	
06:00 - 07:00	0	3	0	0	0	0	0	1	1	0	5
07:00 - 08:00	0	7	1	0	2	1	0	1	0	0	12
08:00 - 09:00	0	5	1	0	0	0	1	1	0	0	8
09:00 - 10:00	0	5	0	0	1	0	1	1	0	0	8
10:00 - 11:00	1	7	0	0	1	0	0	0	0	0	9
11:00 - 12:00	0	4	1	0	0	0	0	0	2	0	7
12:00 - 13:00	1	8	0	0	3	0	0	0	0	0	12
13:00 - 14:00	0	10	1	0	4	0	0	1	0	0	16
14:00 - 15:00	0	2	0	0	2	1	0	0	0	0	5
15:00 - 16:00	0	13	0	1	1	0	0	2	0	0	17
16:00 - 17:00	0	3	1	0	1	0	0	0	0	0	5
17:00 - 18:00	0	4	0	0	1	1	0	0	0	0	6
18:00 - 19:00	0	3	1	0	1	1	0	0	0	0	6
19:00 - 20:00	0	2	0	0	1	0	0	0	0	0	3
20:00 - 21:00	0	1	0	0	1	1	0	0	0	0	3
21:00 - 22:00	0	2	0	0	1	0	0	0	0	0	3
<b>Total Number of Vehicle</b>											
<b>Veh 16 hrs</b>	<b>2</b>	<b>79</b>	<b>6</b>	<b>1</b>	<b>20</b>	<b>5</b>	<b>2</b>	<b>7</b>	<b>3</b>		<b>125</b>
<b>Total Passenger Car Units</b>											
<b>PCU Rate</b>	0,33	1,00	1,25	1,00	1,00	1,50	2,00	1,25	1,50	2,00	
<b>PCU 16 hrs</b>	<b>1</b>	<b>79</b>	<b>8</b>	<b>1</b>	<b>20</b>	<b>8</b>	<b>4</b>	<b>9</b>	<b>5</b>	<b>0</b>	<b>133</b>

Waypoint:004  
 424344  
 4493179

**Table 6.3.2-11 Kakruke - Corovode**

Location Kakruke :  
Date 25-gen : \_\_\_\_2012  
Day /Wednesday

Direction Code 135  
Direction from Kakruke  
Direction to Corovode

our	1	2	3	4	5	6	7	8	9	10	Total
	Motor Cycle	Private Car (sedan, van)	Private Microbus	Taxi	Small (Pick Up) Truck	Medium Truck (<5 tons)	Large Truck (>=5 tons)	Minibus& Medium Bus	Large Bus	Agriculture Machinery	
06:00 - 07:00	0	4	0	0	1	1	0	1	0	0	7
07:00 - 08:00	0	5	1	2	0	0	1	1	0	0	10
08:00 - 09:00	0	6	1	0	1	1	0	1	0	0	10
09:00 - 10:00	0	7	0	1	4	0	0	1	1	0	14
10:00 - 11:00	0	6	2	0	1	0	0	1	0	0	10
11:00 - 12:00	0	11	1	0	3	0	1	0	0	0	16
12:00 - 13:00	1	7	0	0	1	1	0	2	0	0	12
13:00 - 14:00	0	11	1	0	1	0	2	0	0	0	15
14:00 - 15:00	0	3	0	0	0	1	0	0	0	0	4
15:00 - 16:00	0	6	0	0	0	0	0	0	1	0	7
16:00 - 17:00	0	3	1	0	3	0	1	0	0	0	8
17:00 - 18:00	0	5	0	0	0	0	1	0	1	0	7
18:00 - 19:00	0	4	0	1	0	0	0	1	0	0	6
19:00 - 20:00	0	3	0	0	1	0	0	1	0	0	5
20:00 - 21:00	1	4	0	0	0	1	0	0	0	0	6
21:00 - 22:00	0	2	0	0	0	0	0	0	0	0	2
<b>Total Number of Vehicle</b>											
<b>Veh 16 hrs</b>	<b>2</b>	<b>87</b>	<b>7</b>	<b>4</b>	<b>16</b>	<b>5</b>	<b>6</b>	<b>9</b>	<b>3</b>		<b>139</b>
<b>Total Passenger Car Units</b>											
<b>PCU Rate</b>	0,33	1,00	1,25	1,00	1,00	1,50	2,00	1,25	1,50	2,00	
<b>PCU 16 hrs</b>	<b>1</b>	<b>87</b>	<b>9</b>	<b>4</b>	<b>16</b>	<b>8</b>	<b>12</b>	<b>11</b>	<b>5</b>	<b>0</b>	<b>152</b>

Waypoint:004  
424344  
4493179



**Table 6.3.2-12 Polican – Berat**

Location      Ura vajguore :  
Date            23-01 : \_\_\_\_2012  
Day             Monday

Direction Code 143  
Direction from Polican  
Direction to Berat

our	1	2	3	4	5	6	7	8	9	10	Total
	Motor Cycle	Private Car (sedan, van)	Private Microbus	Taxi	Small (Pick Up) Truck	Medium Truck (<5 tons)	Large Truck (>=5 tons)	Minibus& Medium Bus	Large Bus	Agriculture Machinery	
06:00 - 07:00	1	9	1	0	1	1	2	0	2	0	17
07:00 - 08:00	0	15	0	0	3	1	0	3	0	0	22
08:00 - 09:00	0	18	1	0	1	1	0	2	5	0	28
09:00 - 10:00	0	30	0	0	2	0	1	2	1	0	36
10:00 - 11:00	2	29	1	0	1	0	0	1	2	0	36
11:00 - 12:00	5	26	2	0	5	3	1	1	3	0	46
12:00 - 13:00	3	25	1	0	9	0	1	0	1	0	40
13:00 - 14:00	3	27	2	1	13	2	3	0	3	0	54
14:00 - 15:00	2	16	0	0	13	5	0	0	0	0	36
15:00 - 16:00	0	34	0	0	4	1	1	2	0	0	42
16:00 - 17:00	0	13	0	0	1	0	0	1	0	0	15
17:00 - 18:00	0	10	0	0	3	1	0	0	0	0	14
18:00 - 19:00	1	6	0	0	1	1	0	0	0	0	9
19:00 - 20:00	2	6	0	0	0	0	0	0	0	0	8
20:00 - 21:00	0	3	0	0	0	0	0	0	0	0	3
21:00 - 22:00	0	1	0	0	0	0	0	0	0	0	1
<b>Total Number of Vehicle</b>											
<b>Veh 16 hrs</b>	<b>19</b>	<b>268</b>	<b>8</b>	<b>1</b>	<b>57</b>	<b>16</b>	<b>9</b>	<b>12</b>	<b>17</b>		<b>407</b>
<b>Total Passenger Car Units</b>											
<b>PCU Rate</b>	0,33	1,00	1,25	1,00	1,00	1,50	2,00	1,25	1,50	2,00	
<b>PCU 16 hrs</b>	<b>6</b>	<b>268</b>	<b>10</b>	<b>1</b>	<b>57</b>	<b>24</b>	<b>18</b>	<b>15</b>	<b>26</b>	<b>0</b>	<b>425</b>

Waypoint;001  
423427  
4496395

### 6.3.2.3 Raw Traffic Counts Data: Fier

**Table 6.3.2-13 Drenovica - Fier**

Location Number	149	Direction Code	5&6	<b>WP</b>
Date	: 25/01/2011	Direction from	: Drenovica	
Day	3	Direction to	: Fier	

Hour	1	2	3	4	5	6	7	8	9	10	Total
	Motor Cycle	Private Car (sedan, van)	Taxi	Microbus	Small (Pick Up) Truck	Medium Truck (<5 tons)	Large Truck (>=5 tons)	Minibus&Medium Bus	Large Bus	Agricultural Machines	
06:00 - 07:00	1	18	2	3		7					31
07:00 - 08:00	1	20	3	4	3	1	7		2		41
08:00 - 09:00	2	38	3	17	6	2	10	1	1		80
09:00 - 10:00	5	46		13	10	3	4			1	82
10:00 - 11:00	6	43	1	8	16	1	4			1	80
11:00 - 12:00	4	42		17	9	2	4			1	79
12:00 - 13:00	2	28		10	11	2	2				55
13:00 - 14:00	2	43		12	6	2	9	1		1	76
14:00 - 15:00	1	39		7		10	8			2	67
15:00 - 16:00	3	48		8	5	7					71
16:00 - 17:00	8	38		6	1	7	4			1	65
17:00 - 18:00	4	40		5		5	5		2		61
18:00 - 19:00		19									19
19:00 - 20:00	1	15			2	1	7				26
20:00 - 21:00		12	1		1		8				22
21:00 - 22:00		8					2				10
<b>Total Number of Vehicle</b>											
<b>Veh 16 hrs</b>	<b>40</b>	<b>497</b>	<b>10</b>	<b>110</b>	<b>70</b>	<b>50</b>	<b>74</b>	<b>2</b>	<b>5</b>	<b>7</b>	<b>865</b>
<b>Total Passenger Car Units</b>											
PCU Rate	0,33	1,00	1,25	1,00	1,00	1,50	2,00	1,25	1,50	2,00	
<b>PCU 16 hrs</b>	<b>13</b>	<b>497</b>	<b>13</b>	<b>110</b>	<b>70</b>	<b>75</b>	<b>148</b>	<b>3</b>	<b>8</b>	<b>14</b>	<b>950</b>

Project Title: **Trans Adriatic Pipeline – TAP**

Document Title: **ESIA Albania Annex 6.3 - Onshore Socioeconomic Environment**

**AAL00-ERM-641-Y-TAE-1008**  
Rev.: 03 / at24

**Table 6.3.2-14 Fier - Drenovica**

Location Number : 149

Date : 25/01/2011

Day 3

Direction Code : 5 & 6

Direction from : Fier

Direction to : Drenovica

Hour	1	2	3	4	5	6	7	8	9	10	Total
	Motor Cycle	Private Car (sedan, van)	Taxi	Microbus	Small (Pick Up) Truck	Medium Truck (<5 tons)	Large Truck (>=5 tons)	Minibus&Medium Bus	Large Bus	Agricultural Machines	
06:00 - 07:00	1	9	2		1	3	5				21
07:00 - 08:00	2	17	5	6	1	6	3		3		43
08:00 - 09:00	5	34	2	15	12	2	7	1			78
09:00 - 10:00	4	31		14	11		6		3	1	70
10:00 - 11:00	3	45		11	6		7			1	73
11:00 - 12:00	4	39	1	10	8		3	1		1	67
12:00 - 13:00	1	45	1	11	6	2	13				79
13:00 - 14:00	4	20		6	4		2	1	3		40
14:00 - 15:00	1	40		11		8	3				63
15:00 - 16:00	3	42		10	1	7	2	1			66
16:00 - 17:00	8	21		7	2	6	2				46
17:00 - 18:00	5	47		5	1	5	10			1	74
18:00 - 19:00		17		1							18
19:00 - 20:00	2	12	1	1	1	5	3				25
20:00 - 21:00	1	9	2	2		2	2				18
21:00 - 22:00		7			1	4	5				17
<b>Total Number of Vehicle</b>											
<b>Veh 16 hrs</b>	<b>44</b>	<b>435</b>	<b>14</b>	<b>110</b>	<b>55</b>	<b>50</b>	<b>73</b>	<b>4</b>	<b>9</b>	<b>4</b>	<b>798</b>
<b>Total Passenger Car Units</b>											
<b>PCU Rate</b>	0,33	1,00	1,25	1,00	1,00	1,50	2,00	1,25	1,50	2,00	
<b>PCU 16 hrs</b>	<b>15</b>	<b>435</b>	<b>18</b>	<b>110</b>	<b>55</b>	<b>75</b>	<b>146</b>	<b>5</b>	<b>14</b>	<b>8</b>	<b>880</b>

Project Title: **Trans Adriatic Pipeline – TAP**

Document Title: **ESIA Albania Annex 6.3 - Onshore Socioeconomic Environment**

**AAL00-ERM-641-Y-TAE-1008**  
Rev.: 03 / at24

**Table 6.3.2-15 Fier - Topoja**

Location Number : 147  
Date : 24/01/2011  
Day : 2

Direction Code : 3 & 4  
Direction from : Fier  
Direction to : Topoja

Hour	1	2	3	4	5	6	7	8	9	10	Total
	Motor Cycle	Private Car (sedan, van)	Taxi	Microbus	Small (Pick Up) Truck	Medium Truck (<5 tons)	Large Truck (>=5 tons)	Minibus&Medium Bus	Large Bus	Agricultural Machines	
06:00 - 07:00	4	8				3					15
07:00 - 08:00	10	11		2	2	2	1				28
08:00 - 09:00	13	13			3	3	1				33
09:00 - 10:00	13	13			4	2	1			1	34
10:00 - 11:00	16	31		1	2	2					52
11:00 - 12:00	18	21			2	3					44
12:00 - 13:00	21	25				2			1	1	50
13:00 - 14:00	15	26	1	1	1	7	1			2	54
14:00 - 15:00	16	22			3	1		1			43
15:00 - 16:00	15	21			2	1					39
16:00 - 17:00	15	20									35
17:00 - 18:00	13	15			1				1	1	31
18:00 - 19:00	3	8			1					1	13
19:00 - 20:00	3	5		1	1						10
20:00 - 21:00	2	3			1					1	7
21:00 - 22:00	1	3			1					1	6
<b>Total Number of Vehicle</b>											
<b>Veh 16 hrs</b>	<b>178</b>	<b>245</b>	<b>1</b>	<b>5</b>	<b>24</b>	<b>26</b>	<b>4</b>	<b>1</b>	<b>2</b>	<b>8</b>	<b>494</b>
<b>Total Passenger Car Units</b>											
<b>PCU Rate</b>	0,33	1,00	1,25	1,00	1,00	1,50	2,00	1,25	1,50	2,00	
<b>PCU 16 hrs</b>	<b>59</b>	<b>245</b>	<b>1</b>	<b>5</b>	<b>24</b>	<b>39</b>	<b>8</b>	<b>1</b>	<b>3</b>	<b>16</b>	<b>401</b>

**Table 6.3.2-16 Daullas - Fier**

Location Number : 146	Direction Code : 7 & 8
Date : 26/01/2011	Direction from : Daullas
Day : 4	Direction to : Fier

Hour	1	2	3	4	5	6	7	8	9	10	Total
	Motor Cycle	Private Car (sedan, van)	Taxi	Microbus	Small (Pick Up) Truck	Medium Truck (<5 tons)	Large Truck (>=5 tons)	Minibus&Medium Bus	Large Bus	Agricultural Machines	
06:00 - 07:00	3	58		13	18	3	11		2		108
07:00 - 08:00	3	130	2	33	24	4	7	1	1		205
08:00 - 09:00	1	141	2	16	20	2	7	5	2	1	197
09:00 - 10:00		160	2	20	25	4	6	1	3		221
10:00 - 11:00	1	194	1	24	25	8	8		2		263
11:00 - 12:00	2	175	1	23	18	10	20	1	2		252
12:00 - 13:00	1	145	3	31	22	15	15	1	2		235
13:00 - 14:00	1	158	1	24	21	4	16		2		227
14:00 - 15:00	1	137		32	3	5	19	2	4		203
15:00 - 16:00		178		41	8	13	24	1	4		269
16:00 - 17:00	4	172		25	6	26	18		6		257
17:00 - 18:00		160	1	10	7	12	19		6		215
18:00 - 19:00		147		13	1	4	5	2	6		178
19:00 - 20:00		106		5		2	9		4		126
20:00 - 21:00		71	1	2		4	11	1	2		92
21:00 - 22:00		58					6		2		66
<b>Total Number of Vehicle</b>											
Veh 16 hrs	17	2.190	14	312	198	116	201	15	50	1	3.114
<b>Total Passenger Car Units</b>											
PCU Rate	0,33	1,00	1,25	1,00	1,00	1,50	2,00	1,25	1,50	2,00	
PCU 16 hrs	6	2.190	18	312	198	174	402	19	75	2	3.395



**Table 6.3.2-17 Fier - Daullas**

Location Number	146	Direction Code	: 7 & 8
Date	:26/01/2011	Direction from	: Fier
Day	4	Direction to	: Daullas

Hour	1	2	3	4	5	6	7	8	9	10	Total
	Motor Cycle	Private Car (sedan, van)	Taxi	Microbus	Small (Pick Up) Truck	Medium Truck (<5 tons)	Large Truck (>=5 tons)	Minibus&Medium Bus	Large Bus	Agricultural Machines	
06:00 - 07:00	1	79	1	26	5	3	4		8		127
07:00 - 08:00		130	4	22	10	2	1		5		174
08:00 - 09:00	1	155	3	18	15	4	4	2	4		206
09:00 - 10:00	1	160	3	29	18	8	9		2		230
10:00 - 11:00	4	191	6	19	23	8	11	3	4		269
11:00 - 12:00	2	167	2	17	32	8	6		3		237
12:00 - 13:00	1	196	3	17	33	5	23	1	2		281
13:00 - 14:00	1	193	1	18	35	3	23	1	3		278
14:00 - 15:00		91	7	24	5	5	16	2	1		151
15:00 - 16:00	2	167	20	64	10	14	18	5	7		307
16:00 - 17:00	3	168	13	25	6	9	17	4	2		247
17:00 - 18:00		149	9	30	7	5	19	3	1		223
18:00 - 19:00		117	2	20	7		8		5		159
19:00 - 20:00		54	2	11	6	3	3				79
20:00 - 21:00		35		2	2	1	6		1		47
21:00 - 22:00		28	2	2	1	3	3				39
<b>Total Number of Vehicle</b>											
<b>Veh 16 hrs</b>	<b>16</b>	<b>2.080</b>	<b>78</b>	<b>344</b>	<b>215</b>	<b>81</b>	<b>171</b>	<b>21</b>	<b>48</b>	<b>0</b>	<b>3.054</b>
<b>Total Passenger Car Units</b>											
<b>PCU Rate</b>	0,33	1,00	1,25	1,00	1,00	1,50	2,00	1,25	1,50	2,00	
<b>PCU 16 hrs</b>	<b>5</b>	<b>2.080</b>	<b>98</b>	<b>344</b>	<b>215</b>	<b>122</b>	<b>342</b>	<b>26</b>	<b>72</b>	<b>0</b>	<b>3.304</b>

Project Title: **Trans Adriatic Pipeline – TAP**

Document Title: **ESIA Albania Annex 6.3 - Onshore Socioeconomic Environment**

**AAL00-ERM-641-Y-TAE-1008**  
Rev.: 03 / at24

**Table 6.3.2-18 Totoja – Fier**

Location Number : 147

Date : 24/01/2011

Day : 2

Direction Code : 3 & 4

Direction from : Topoja

Direction to : Fier

Hour	1	2	3	4	5	6	7	8	9	10	Total
	Motor Cycle	Private Car (sedan, van)	Taxi	Microbus	Small (Pick Up) Truck	Medium Truck (<5 tons)	Large Truck (>=5 tons)	Minibus&Medium Bus	Large Bus	Agricultural Machines	
06:00 - 07:00	4	3			1	3			1		12
07:00 - 08:00	6	17		2		2			1		28
08:00 - 09:00	13	10			2	3				2	30
09:00 - 10:00	13	19			2	2			1		37
10:00 - 11:00	12	11			2	3	1			1	30
11:00 - 12:00	16	22			1	7					46
12:00 - 13:00	13	14				2					29
13:00 - 14:00	18	14	1		1	2	1			2	39
14:00 - 15:00	12	20			1	3	1				37
15:00 - 16:00	13	22			1	3					39
16:00 - 17:00	8	24		2	3						37
17:00 - 18:00	7	16									23
18:00 - 19:00	6	3			1						10
19:00 - 20:00	6	4									10
20:00 - 21:00	1	4									5
21:00 - 22:00		3									3
<b>Total Number of Vehicle</b>											
<b>Veh 16 hrs</b>	<b>148</b>	<b>206</b>	<b>1</b>	<b>4</b>	<b>15</b>	<b>30</b>	<b>3</b>	<b>0</b>	<b>3</b>	<b>5</b>	<b>415</b>
<b>Total Passenger Car Units</b>											
<b>PCU Rate</b>	0,33	1,00	1,25	1,00	1,00	1,50	2,00	1,25	1,50	2,00	
<b>PCU 16 hrs</b>	<b>49</b>	<b>206</b>	<b>1</b>	<b>4</b>	<b>15</b>	<b>45</b>	<b>6</b>	<b>0</b>	<b>5</b>	<b>10</b>	<b>341</b>



 		Page 27 of 29									
		Area Code	Comp. Code	System Code	Disc. Code	Doc.-Type	Ser. No.				
Project Title:	<b>Trans Adriatic Pipeline – TAP</b>					<b>AAL00-ERM-641-Y-TAE-1008</b> <b>Rev.: 03 / at24</b>					
Document Title:	<b>ESIA Albania Annex 6.3 - Onshore Socioeconomic Environment</b>										

**Table 6.3.2-20 Korce - Kamenice**

Location Kaminice :  
Date 23-01 : \_\_\_\_2012  
Day Monday

Direction Code 139  
Direction from Korce  
Direction to Kaminice

Hour	1	2	3	4	5	6	7	8	9	10	Total
	Motor Cycle	Private Car (sedan, van)	Private Microbus	Taxi	Small (Pick Up) Truck	Medium Truck (<5 tons)	Large Truck (>=5 tons)	Minibus& Medium Bus	Large Bus	Agriculture Machinery	
06:00 - 07:00	0	2	2	0	0	0	0	0	0	0	4
07:00 - 08:00	0	5	3	2	1	0	0	0	0	0	11
08:00 - 09:00	0	10	3	2	3	0	0	2	1	0	21
09:00 - 10:00	1	15	7	3	2	2	0	1	0	1	32
10:00 - 11:00	0	19	2	4	3	3	0	1	0	0	32
11:00 - 12:00	0	17	6	1	1	6	0	3	0	0	34
12:00 - 13:00	0	18	2	5	0	2	0	2	1	0	30
13:00 - 14:00	1	15	5	3	4	0	0	1	1	1	31
14:00 - 15:00	0	40	3	8	1	2	0	2	0	0	56
15:00 - 16:00	2	28	0	7	3	0	0	0	0	0	40
16:00 - 17:00	0	24	1	2	4	1	0	1	0	0	33
17:00 - 18:00	0	5	0	1	1	1	0	0	0	0	8
18:00 - 19:00	0	8	1	1	0	0	0	0	0	1	11
19:00 - 20:00	0	9	1	1	0	0	0	0	0	0	11
20:00 - 21:00	0	5	1	0	2	1	0	0	0	0	9
21:00 - 22:00	0	3	1	1	0	0	0	0	0	0	5
<b>Total Number of Vehicle</b>											
Veh 16 hrs	4	223	38	41	25	18	0	13	3		368
<b>Total Passenger Car Units</b>											
PCU Rate	0,33	1,00	1,25	1,00	1,00	1,50	2,00	1,25	1,50	2,00	
PCU 16 hrs	1	223	48	41	25	27	0	16	5	0	386

 		Page 28 of 29					
		Area Code	Comp. Code	System Code	Disc. Code	Doc.-Type	Ser. No.
Project Title:	Trans Adriatic Pipeline – TAP					AAL00-ERM-641-Y-TAE-1008	
Document Title:	ESIA Albania Annex 6.3 - Onshore Socioeconomic Environment					Rev.: 03 / at24	

**Table 6.3.2-21 Rr. Nazionale - Vithkuq**

Location Vithkuq :  
Date 24/01 : \_\_\_\_2012  
Day Tuesday

Direction Code 137  
Direction from Rr. Nazionale Korce-Erseke  
Direction to Vithkuq

Hour	1	2	3	4	5	6	7	8	9	10	Total
	Motor Cycle	Private Car (sedan, van)	Private Microbus	Taxi	Small (Pick Up) Truck	Medium Truck (<5 tons)	Large Truck (>=5 tons)	Minibus& Medium Bus	Large Bus	Agriculture Machinery	
06:00 - 07:00	0	1	0	0	0	0	0	0	0	0	1
07:00 - 08:00	0	1	0	0	1	1	0	0	0	0	3
08:00 - 09:00	0	2	1	0	1	0	0	0	0	0	4
09:00 - 10:00	0	0	0	0	1	1	0	0	0	0	2
10:00 - 11:00	0	2	0	0	1	0	0	0	0	0	3
11:00 - 12:00	0	1	0	0	1	1	0	0	0	0	3
12:00 - 13:00	0	2	0	0	0	0	1	1	0	0	4
13:00 - 14:00	0	1	1	0	0	0	1	0	0	0	3
14:00 - 15:00	0	2	0	1	0	0	0	1	0	0	4
15:00 - 16:00	0	1	0	1	0	0	1	0	0	0	3
16:00 - 17:00	0	0	0	0	0	0	0	1	0	0	1
17:00 - 18:00	0	0	0	0	0	0	0	0	0	0	0
18:00 - 19:00	0	2	0	0	0	0	0	0	0	0	2
19:00 - 20:00	0	1	0	0	0	0	0	0	0	0	1
20:00 - 21:00	0	0	0	0	0	0	0	0	0	0	0
21:00 - 22:00	0	0	0	0	0	0	0	0	0	0	0
<b>Total Number of Vehicle</b>											
Veh 16 hrs	0	16	2	2	5	3	3	3	0		34
<b>Total Passenger Car Units</b>											
PCU Rate	0,33	1,00	1,25	1,00	1,00	1,50	2,00	1,25	1,50	2,00	
PCU 16 hrs	0	16	3	2	5	5	6	4	0	0	40



 		Page 29 of 29									
		Area Code	Comp. Code	System Code	Disc. Code	Doc.-Type	Ser. No.				
Project Title:	Trans Adriatic Pipeline – TAP					AAL00-ERM-641-Y-TAE-1008					
Document Title:	ESIA Albania Annex 6.3 - Onshore Socioeconomic Environment					Rev.: 03 / at24					

**Table 6.3.2-22 Rr. Nazionale - Korce-Erseke**

Location Vithkuq :  
Date 24/01 : \_\_\_\_2012  
Day Tuesday

Direction Code 137  
Direction from Vithkuq  
Direction to Rr. Nazionale Korce-Erseke

Hour	1	2	3	4	5	6	7	8	9	10	Total
	Motor Cycle	Private Car (sedan, van)	Private Microbus	Taxi	Small (Pick Up) Truck	Medium Truck (<5 tons)	Large Truck (>=5 tons)	Minibus& Medium Bus	Large Bus	Agriculture Machinery	
06:00 - 07:00	0	1	0	1	0	0	0	0	0	0	2
07:00 - 08:00	0	1	2	1	0	1	0	1	0	0	6
08:00 - 09:00	0	1	0	0	1	1	0	0	0	0	3
09:00 - 10:00	0	2	0	0	1	1	0	0	0	0	4
10:00 - 11:00	0	0	1	0	1	0	1	0	0	0	3
11:00 - 12:00	0	1	0	0	0	1	0	0	0	0	2
12:00 - 13:00	0	1	0	0	1	0	0	0	0	0	2
13:00 - 14:00	0	1	1	0	0	0	1	0	0	0	3
14:00 - 15:00	0	1	2	0	0	0	1	0	0	0	4
15:00 - 16:00	0	1	0	1	1	0	0	0	0	0	3
16:00 - 17:00	0	2	0	0	0	0	0	0	0	0	2
17:00 - 18:00	0	1	0	0	0	0	1	0	0	0	2
18:00 - 19:00	0	1	0	0	0	0	0	0	0	0	1
19:00 - 20:00	0	0	0	0	0	0	0	0	0	0	0
20:00 - 21:00	0	0	0	0	0	0	0	0	0	0	0
21:00 - 22:00	0	0	0	0	0	0	0	0	0	0	0
<b>Total Number of Vehicle</b>											
Veh 16 hrs	0	14	6	3	5	4	4	1	0		37
<b>Total Passenger Car Units</b>											
PCU Rate	0,33	1,00	1,25	1,00	1,00	1,50	2,00	1,25	1,50	2,00	
PCU 16 hrs	0	14	8	3	5	6	8	1	0	0	45

Trans Adriatic Pipeline AG – Albania (Branch Office)  
Torre Drin, Rruga Abdi Toptani  
Tirana, Albania  
Tel.: + 355 44 306 937  
Fax: + 355 42 265 685

**[esia-comments@tap-ag.com](mailto:esia-comments@tap-ag.com)**  
**[www.tap-ag.com](http://www.tap-ag.com)**

Date 01/2013

Copyright Reserved: This document may not be copied, shown to or placed at the disposal of third parties without prior consent of TAP AG.  
The latest version of the document is registered in the TAP Project's Database.